

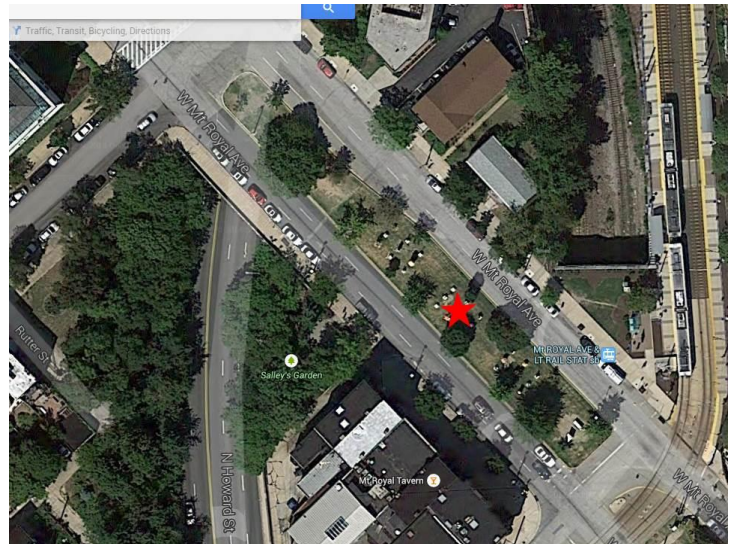
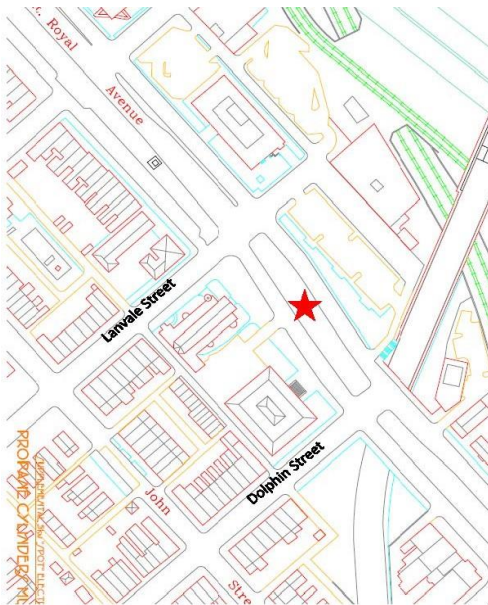
ARTSCAPE 2017: Anchor Project Locations

The 36th annual Artscape, America's largest free arts festival, returns July 21-23, 2017. The festival's theme for 2017 is...

Camp Artscape: Adventure Awaits! offers wondrous possibilities for festival-goers to experience the visual and performing arts in a variety of ways. For many, one of the most exciting parts of summer is taking time to engage in new experiences. Whether at an away camp or a local summer program, it's something to look forward to all year—truly a staple of the summer season. The same goes for Artscape; it's just not summer without it! The theme allows all involved to step out of their comfort zone, learn something new, and experience the adventure that awaits in Baltimore.

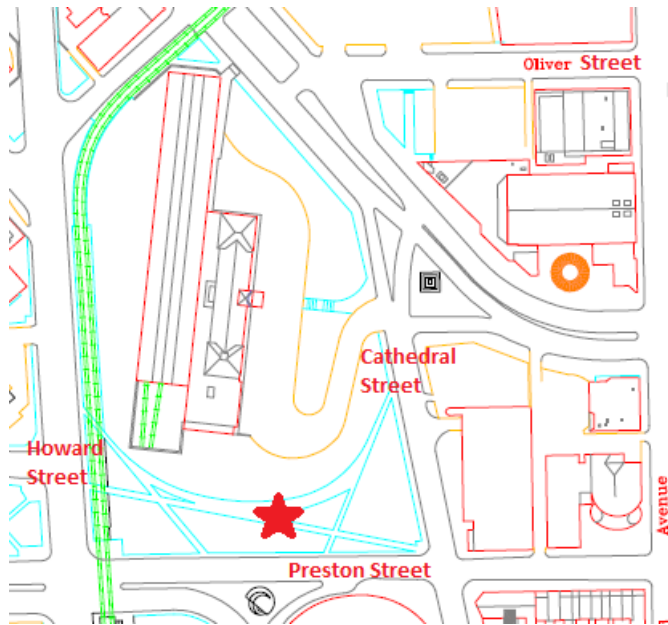
Artscape hours of operation are Friday, July 21 and Saturday, July 23 from 11am-9pm and Sunday, July 23 from 11am-8pm. Artscape After Hours returns on Friday and Saturday nights on Charles Street (from Preston Street to North Avenue) from 9-11pm. Artscape takes place rain or shine.

1. Mt. Royal Avenue median, between Dolphin and Lanvale streets



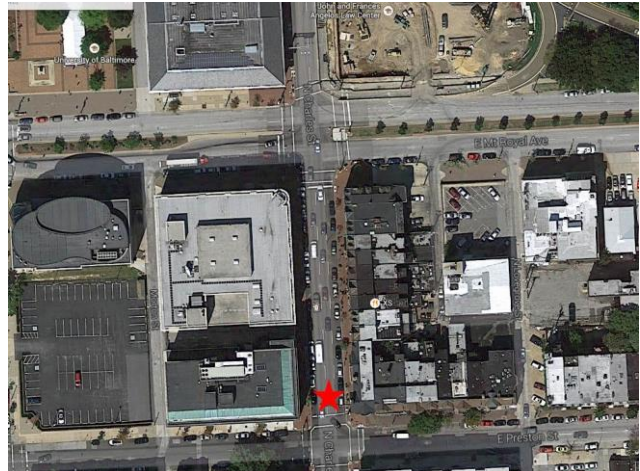
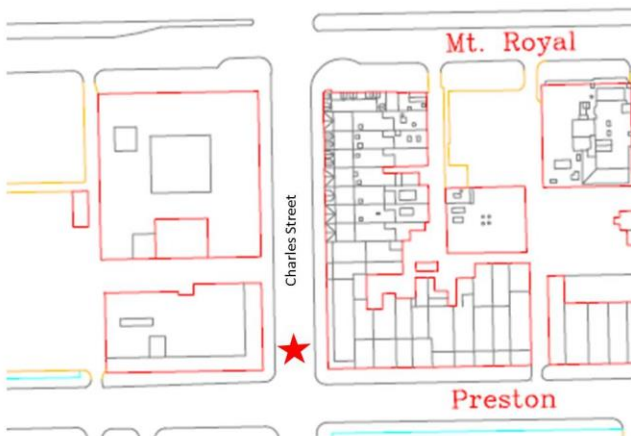
- The Mt. Royal median is not an Artscape After Hours location.
- Due to the nature of this location, installation may begin as early as Wednesday, July 5, 2017. De-installation must occur by 5pm on Tuesday, July 25, 2017.

2. Pearlstone Park



- Pearlstone Park is not an Artscape After Hours location.
- Due to the nature of this location, installation may begin as early as Wednesday, July 5, 2017. De-installation must occur by 5pm on Tuesday, July 25, 2017.
- New for 2017! Pearlstone Park is the location of Kidscape, Artscape's youth component (arts/crafts, organizations/exhibitors, performances, family-friendly entertainment). There will be tents, performance areas, etc. located in the park. Projects for this location should complement Kidscape as a secondary feature of Pearlstone Park.

3. Charles & Preston streets

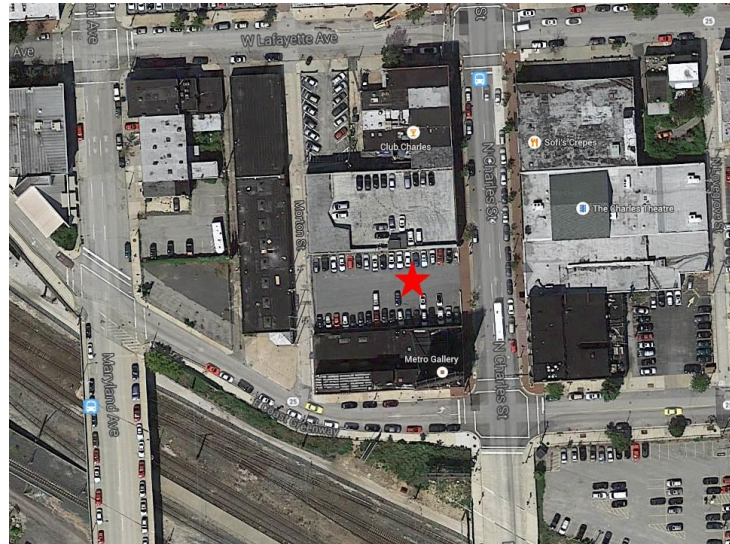


- The Charles & Preston location is an Artscape After Hours location (special programming including lighting is strongly encouraged from 9-11pm).

- Due to the nature of this location, installation on-site begins on Thursday, July 20, 2017, at 10am. De-installation of artwork must be completed before artists leave on Sunday, July 23, 2017 (Charles Street reopens at 6am on Monday, July 24, 2017).

4. **Station North Lot**

(open-air parking lot on the west side of Charles Street, between Lanvale Street and Lafayette Avenue)



- The Station North Lot location is an Artscape After Hours location (special programming including lighting is strongly encouraged from 9-11pm).
- Due to the nature of this location, installation on site may begin on Wednesday, July 19, 2017, at 5pm. De-installation of artwork must be completed before artists leave on Sunday, July 23, 2017.

These **Anchor Projects (Large-Scale Outdoor Performance/Interactive Artwork Anchors)** are a program of the Baltimore Office of Promotion & The Arts, Inc. (BOPA). Artscape is produced by the Baltimore Office of Promotion & The Arts, Inc. on behalf of the Baltimore Festival of the Arts, Inc.